

Repair and rebuild anything made of wood

# QuikWood®

## WOOD REPAIR EPOXY PUTTY STICK

### Rebuild...

- Scratches
- Dry rot
- Knot holes
- Gouges and cracks
- Stripped screw holes
- Carpenter bee damage

### Reshape...

- Handles and knobs
- Level chair legs
- Carvings

### Restore...

- Furniture
- Molding and trim
- Picture frames
- Antiques



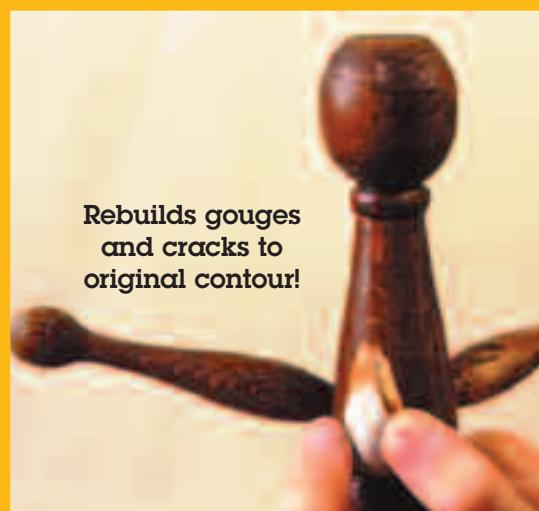
- The ultimate solution for small repairs
- Easy-to-use and mistake-proof
- Bonds instantly with superior strength
- Saves hundreds of dollars in repairs
- Belongs in every workshop and toolbox



Rebuilds and shapes handles and knobs!



Sculpts easily to restore picture frames, molding and trim!



Rebuilds gouges and cracks to original contour!

15  
MINUTE  
WORK  
LIFE

# QuikWood Wood Repair Epoxy Putty Stick

## Product Description

QuikWood is a hand-mixable, fast-setting, epoxy putty specially formulated to repair and rebuild wood quickly and easily. After mixing, it forms a polymer compound that cures to the same density as wood. QuikWood is available in 3 different shades: Mixed QuikWood resembles pale-toned, unfinished wood; Fast-Cure Pine Color is for yellow-toned woods; and Fast-Cure Dark is for dark-toned woods. Any three can be mixed with each other for new shades (work life will be shorter). Each handy stick contains pre-measured portions of activator and base throughout — no measuring or mixing tools are necessary. The consistency (like modeling clay) eliminates drips and runs, facilitates adhesion to the substrate, and allows the material to be formed and sculpted as needed before curing begins. After 60 minutes the application can be drilled, tapped, sawed, sanded, filed, painted, and stained\*. Suitable for interior or exterior use, it is resistant to chemicals, water, and temperature extremes. QuikWood contains no solvents or VOCs. It's non-flammable and releases no noxious fumes. It won't shrink, rot or pull away. The unused portion stays fresh for future use when saved in its original package.

\*Staining: QuikWood accepts stain differently from wood. Some types of pigments and colorants may be added during the mixing step. Always test for stain acceptance, color match and hardening before application.

## Performance Data\*

<b>SHELF LIFE AT 75°F (24°C), minimum</b>	<b>24 months</b>
<b>SHORE D HARDNESS AT FULL CURE (24 hrs)</b>	<b>75</b>
<b>LAP SHEAR TENSILE STRENGTH</b>	
On steel (1" x 1" x 1/16")	900 lbs (6.2 MPa)
On oak (1" x 1" x 1/16")	500 lbs (3.5 MPa)
<b>COMPRESSIVE STRENGTH</b>	8,000 psi (55 MPa)
<b>DENSITY</b>	7.5 lb/gal, 0.9 gm/cm <sup>3</sup>
<b>SHRINKAGE</b>	<1%
<b>NON-VOLATILE CONTENT</b>	100%
<b>ELECTRICAL RESISTANCE</b>	30,000 megohms
<b>DIELECTRIC STRENGTH</b>	300 volts/mil
<b>UPPER TEMPERATURE LIMITS</b>	
Continuous	250°F (121°C)
Intermittent	300°F (149°C)
<b>CHEMICAL RESISTANCE</b>	
Resistant to hydrocarbons, ketones, alcohols, esters, halocarbons, aqueous salt solutions and dilute acids and bases.	

## NOT INTENDED FOR STRUCTURAL APPLICATIONS

\*Not to be used for specification purposes.

## Applicable Standards

Conforms to **ASTM D-4236**.

## Availability

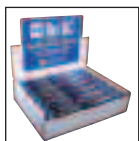
QuikWood is one in a family of Specialty Epoxy Putties originated and manufactured by Polymeric Systems, Inc. Also look for FastSteel®, QuikPlastik®, InstaCrete®, RepairitQuik®, QuikTitanium®, QuikAluminum®, QuikCopper® and AquaMend®. These Polymeric Epoxy Putties give you the ability to fix just about anything.

## Packaging Options

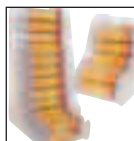
QuikWood is available in 3.5" (1 oz) and 7" (2 oz) lengths. Individually packaged in a reusable clear plastic tube with trilingual (English, Spanish, French) instructions and plastic friction top. Display carton holds 12 or 24 - 3.5" sticks or 12 - 7" sticks per display (packed 2 display cartons per master carton), or bulk-packed 24 sticks per shipper carton. Display cartons are also sold separately for refillable, point-of-purchase display. 3.5" sticks are also available in blister packs (12 per carton); printer minimum applies. Contact Sales for acrylic display rack supplier information.



Blister Packs



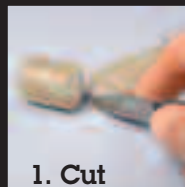
Pop-Up Cardboard Display Carton



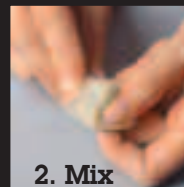
Acrylic Display Racks

## How To Use

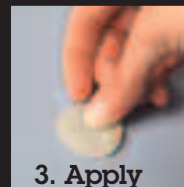
Before applying, roughen and clean the area to be repaired. Then follow these easy steps.



1. Cut



2. Mix



3. Apply

1. **Cut** or twist off required amount.
2. **Mix** by kneading with fingers to a uniform color. If mixing is difficult, warm QuikWood to room temperature or slightly above.
3. **Apply** to surface to be repaired within 10 minutes of mixing (2 minutes for Fast-Cure Pine and Dark). Force into any cracks or holes and strike off excess material, preferably with a tool moistened with clean water.

**For best results:** Use damp fingers for easier mixing, application, and a smooth appearance of the cured compound. Remove excess material before hardening begins.

**Curing:** Original QuikWood has a 15- to 25-minute work life. QuikWood Fast-Cure Pine and Dark each have a 3- to 6-minute work life. Functional cure occurs in 60 minutes.

**WARNING**

• Contains Epoxy Resin and Tri(dimethylaminomethyl)phenol. Exposure may cause allergic reactions. • May be harmful if swallowed. Get prompt medical attention if ingested. • Eye irritant. If eye contact occurs, rinse with tap water for 5 to 10 minutes. If irritation persists, seek medical care. • Skin irritant. Wash hands thoroughly with soap and water after use. If skin irritation occurs, seek medical attention. • KEEP OUT OF REACH OF CHILDREN.



Polymeric Systems, Inc., is a part of Whitford Worldwide. For more information, please contact Polymeric Systems or Whitford Ltd. at:

Polymeric Systems, Inc.  
47 Park Avenue  
Elverson, PA 19520  
888-EPOXY FIX (888-376-9934)  
Tel: +1 (610) 286-2500  
Email: sales@polymericystems.com  
Website: polymericystems.com

In the EU contact:  
Whitford Ltd.  
10, Christleton Court, Manor Park  
Runcorn, Cheshire WA7 1ST UK  
Tel: +44 (0) 1928 571000  
Email: salesuk@whitfordww.com  
Website: whitfordww.com

